

# MCCORMICK TRAILS FLOORPLAN BROCHURE

## REFUGE

2,0192 SQ. FT. | 2-3 BEDROOMS | 2.5 BATHROOMS | 2-CAR GARAGE

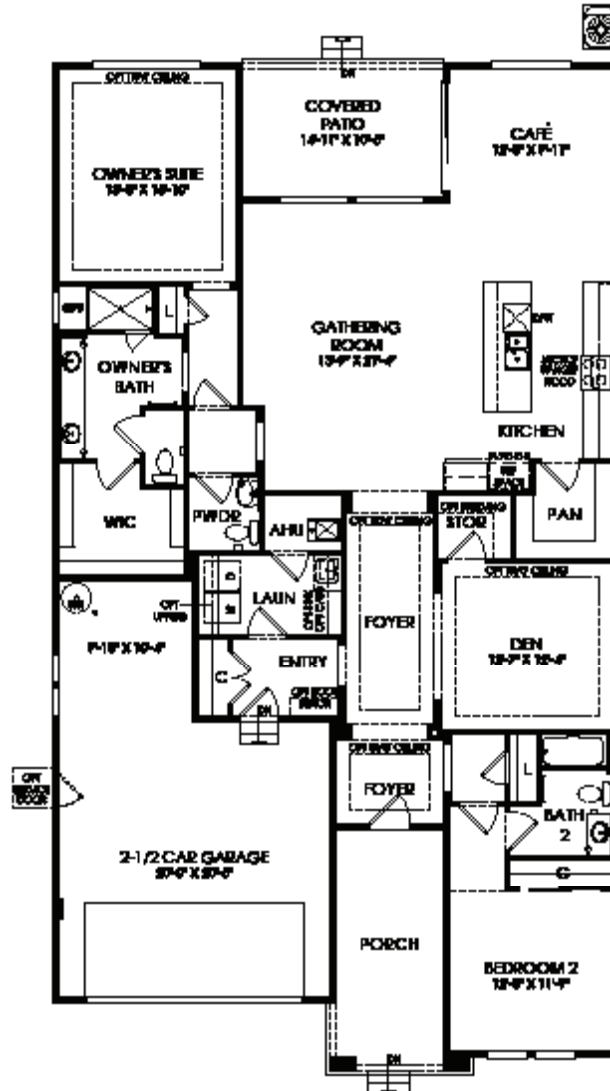


In our continuing effort to improve our product, Pulte Homes reserves the right to make changes or modifications to plan specifications, materials, features, or floor plans without notice. Room dimensions are approximate and actual square footage may vary by elevation. Please see a sales associate for details. Renderings are for illustrative purposes only and is not intended to be an actual representation of a specific home being offered. Square footages listed are approximate. This material shall not constitute a valid offer in any state where prior registration is required or if void by law. Additional conditions, limitations, and restrictions apply; see a sales associate for details. ©2022 Pulte Homes. All rights reserved.

# MCCORMICK TRAILS FLOORPLAN BROCHURE

## REFUGE

2,0192 SQ. FT. | 2-3 BEDROOMS | 2.5 BATHROOMS | 2-CAR GARAGE



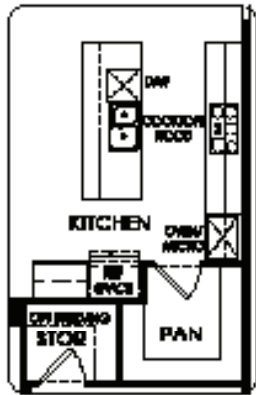
First Floor

# MCCORMICK TRAILS

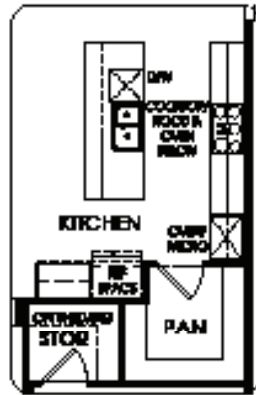
## FLOORPLAN BROCHURE

### REFUGE

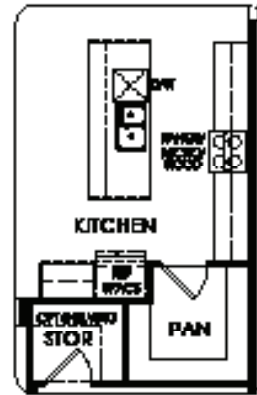
2,0192 SQ. FT. | 2-3 BEDROOMS | 2.5 BATHROOMS | 2-CAR GARAGE



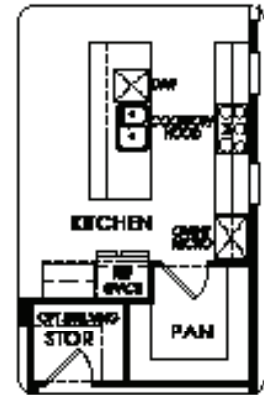
73447 - Chef



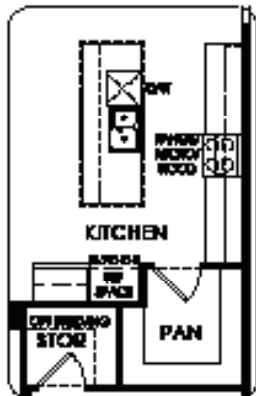
73458 - Culinary



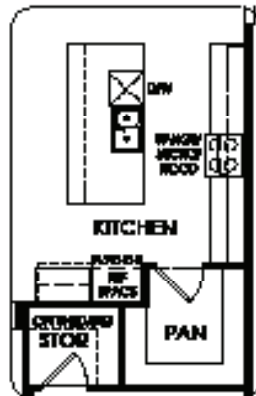
70283 - Kitchen Island - Waterfall Edge



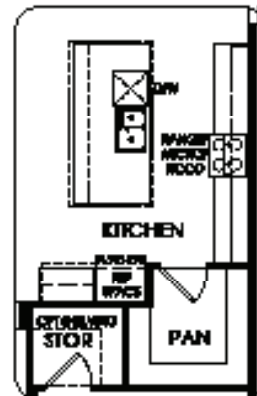
71230 - Windows at Kitchen Backsplash  
SHOWN AT ONE END OF THE KITCHEN ISLAND



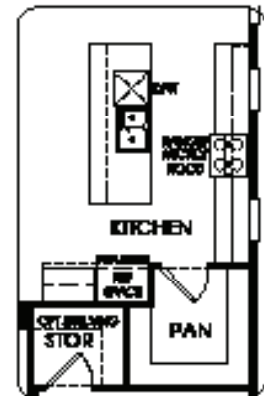
71035 - Accent Ceiling



70282 - Kitchen Island - Executive



71035 - Accent Ceiling  
SHOWN AT KITCHEN ISLAND EXECUTIVE



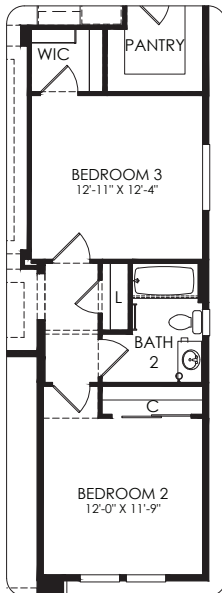
71230 - Windows at Kitchen Backsplash

# MCCORMICK TRAILS

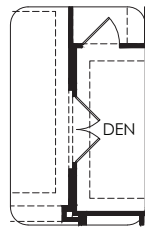
## FLOORPLAN BROCHURE

### REFUGE

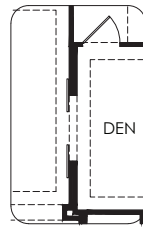
2,0192 SQ. FT. | 2-3 BEDROOMS | 2.5 BATHROOMS | 2-CAR GARAGE



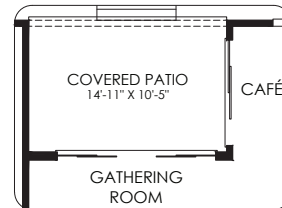
70060 - Bedroom 3



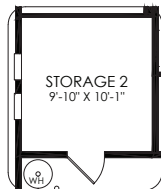
70438 - Double Door  
NOT AVAILABLE WITH  
BEDROOM 3 OPT 70060



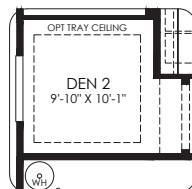
70496 - Double Barn Door  
NOT AVAILABLE WITH  
BEDROOM 3 OPT 70060



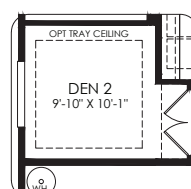
70480 - Center Sliding Glass Door



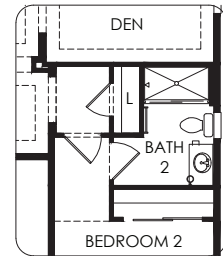
70251 - Storage 2  
NOT AVAILABLE WITH OWNER'S BATH OPT 70012, 70055  
NOT AVAILABLE WITH DEN 2 OPT 70131



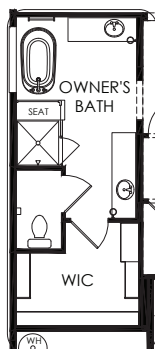
70131 - Den 2  
NOT AVAILABLE WITH OWNER'S BATH OPT 70012, 70055  
NOT AVAILABLE WITH STORAGE 2 OPT 70251



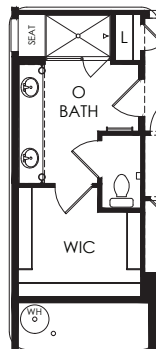
70438 - Double Door  
ONLY AVAILABLE AT DEN 2 OPT 70131



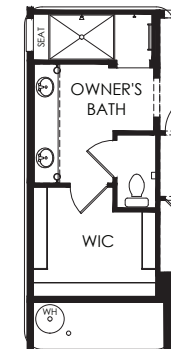
70017 - Secondary Bath - Shower



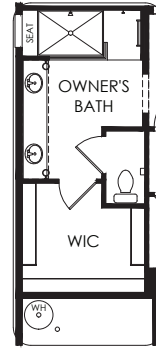
70055 - Owner's Bath - Freestanding Tub



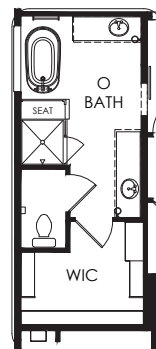
70432 - Door



70009 - Framed Walk-In Shower



70011 - Owner's Bath - Glass Walk-In Shower Half Wall



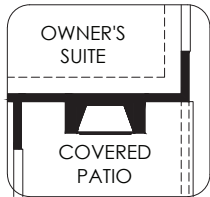
70497 - Barn Door  
SHOWN AT OWNER'S BATH OPT 70055  
ONLY AVAILABLE AT OWNER'S BATH OPT 70009, 70011, 70055

In our continuing effort to improve our product, Pulte Homes reserves the right to make changes or modifications to plan specifications, materials, features, or floor plans without notice. Room dimensions are approximate and actual square footage may vary by elevation. Please see a sales associate for details. Renderings are for illustrative purposes only and is not intended to be an actual representation of a specific home being offered. Square footages listed are approximate. This material shall not constitute a valid offer in any state where prior registration is required or if void by law. Additional conditions, limitations, and restrictions apply; see a sales associate for details. ©2022 Pulte Homes. All rights reserved.

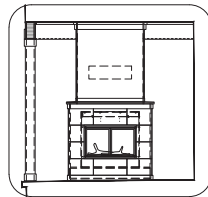


### REFUGE

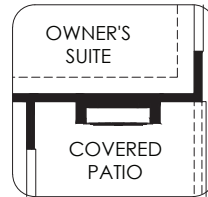
2,0192 SQ. FT. | 2-3 BEDROOMS | 2.5 BATHROOMS | 2-CAR GARAGE



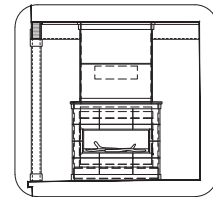
70839 - Fireplace  
Exterior - Veneer



70839 - Fireplace  
Exterior - Veneer



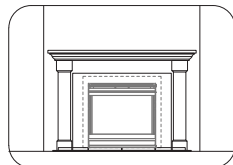
70841 - Fireplace  
Exterior 2 - Veneer



70841 - Fireplace  
Exterior 2 - Veneer



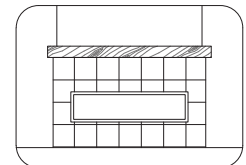
70800 - Fireplace  
Interior



70800 - Fireplace  
Interior



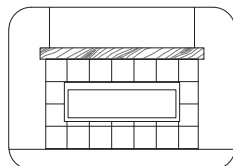
70810 - Fireplace  
Interior 2



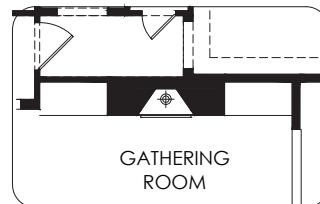
70810 - Fireplace  
Interior 2



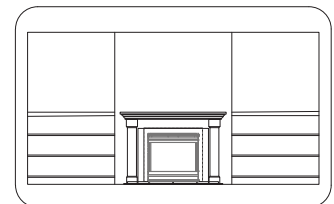
70812 - Fireplace  
Interior 3 - Electric



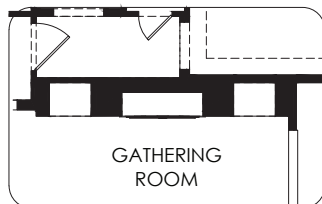
70812 - Fireplace  
Interior 3 - Electric



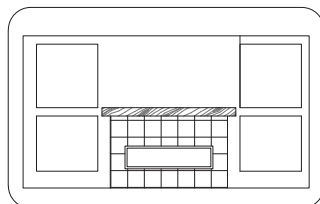
71051 - AV Built-In  
with Fireplace



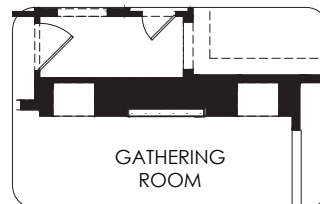
71051 - AV Built-In  
with Fireplace



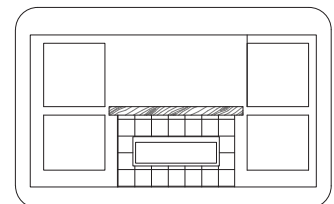
71062 - AV Built-In  
with Fireplace 2



71062 - AV Built-In  
with Fireplace 2



71084 - AV Built-In with  
Fireplace 3 - Electric



71084 - AV Built-In with  
Fireplace 3 - Electric