

MCCORMICK TRAILS

FLOORPLAN BROCHURE

LYNWOOD

3,236 SQ. FT. | 4-6 BEDROOMS | 2.5-4 BATHROOMS | 2-CAR GARAGE



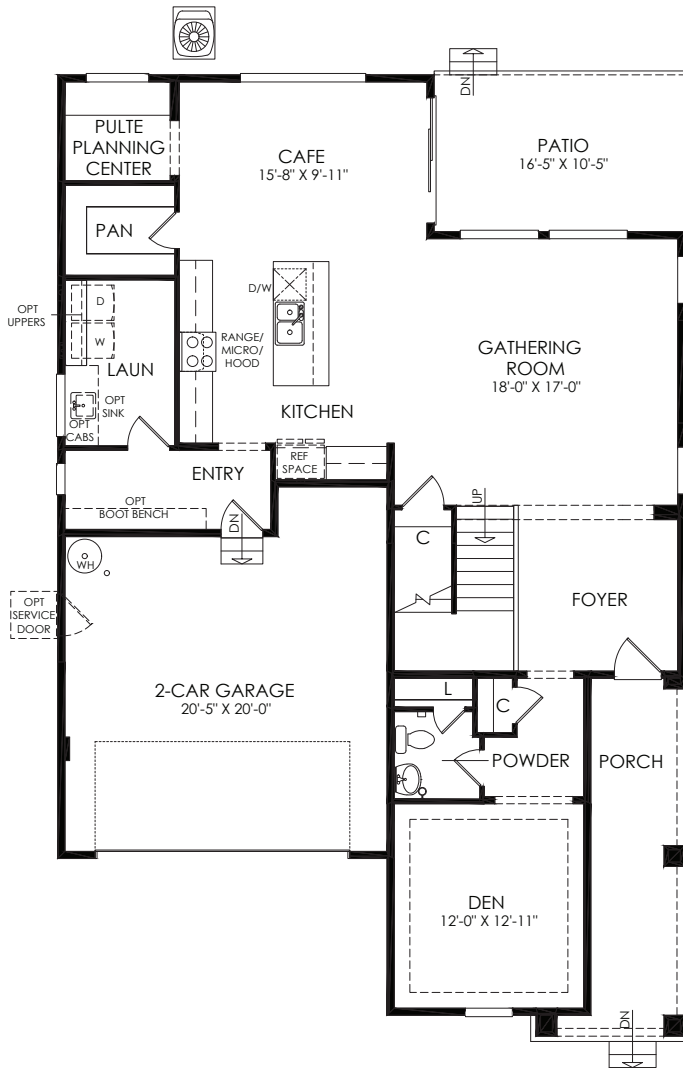
In our continuing effort to improve our product, Pulte Homes reserves the right to make changes or modifications to plan specifications, materials, features, or floor plans without notice. Room dimensions are approximate and actual square footage may vary by elevation. Please see a sales associate for details. Renderings are for illustrative purposes only and is not intended to be an actual representation of a specific home being offered. Square footages listed are approximate. This material shall not constitute a valid offer in any state where prior registration is required or if void by law. Additional conditions, limitations, and restrictions apply; see a sales associate for details. ©2020 Pulte Homes. All rights reserved.

MCCORMICK TRAILS

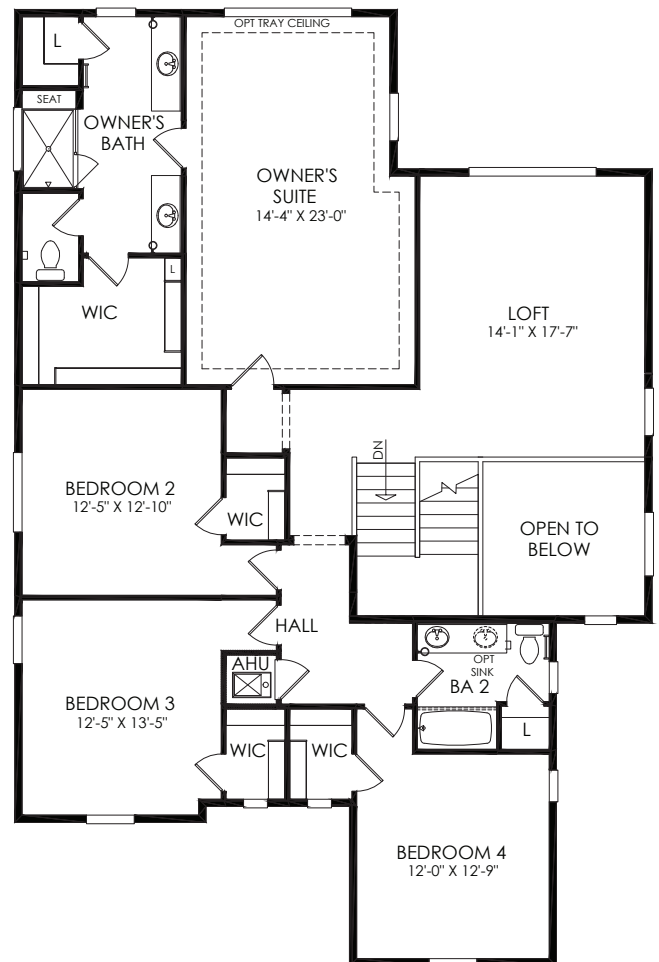
FLOORPLAN BROCHURE

LYNWOOD

3,236 SQ. FT. | 4-6 BEDROOMS | 2.5-4 BATHROOMS | 2-CAR GARAGE



First Floor



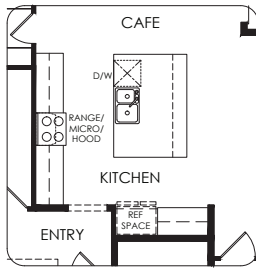
Second Floor

MCCORMICK TRAILS

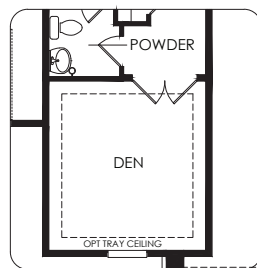
FLOORPLAN BROCHURE

LYNWOOD

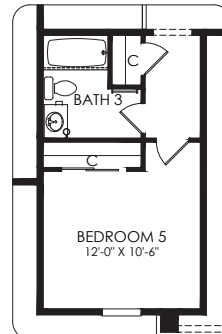
3,236 SQ. FT. | 4-6 BEDROOMS | 2.5-4 BATHROOMS | 2-CAR GARAGE



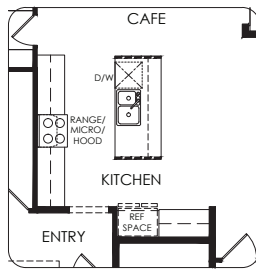
70282 - Kitchen Island Executive



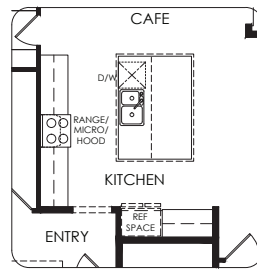
70438 - Double Doors



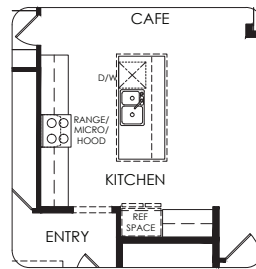
70030 - Bedroom and Bath



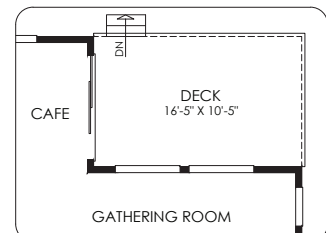
70283 - Kitchen Island Waterfall Edge



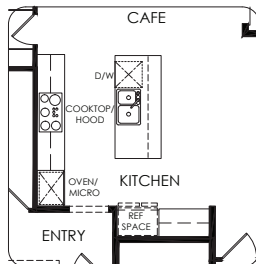
71035 - Accent Ceiling
Only with 70282 - Kitchen Island Executive



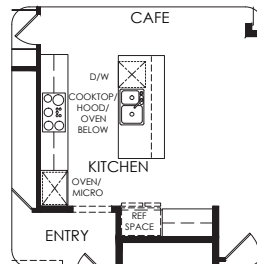
71035 - Accent Ceiling
Not Available with 70281 - Kitchen Island Upgrade



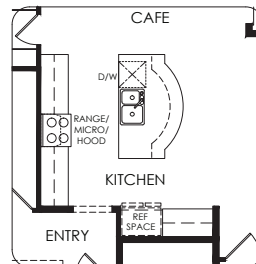
70680 - Deck - Wood



73447 - Chef



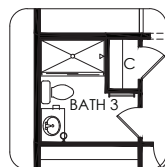
73458 - Culinary



70281 - Kitchen Island Upgrade



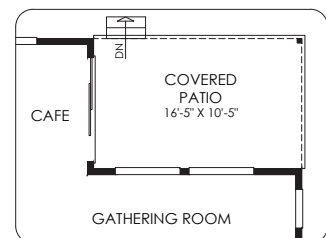
70300 - Covered Deck



70017 - Secondary Bath - Shower



70026 - Secondary Bath - Shower With Seat



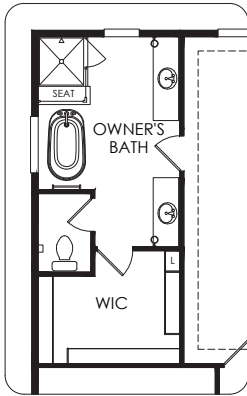
70300 - Covered Patio

MCCORMICK TRAILS

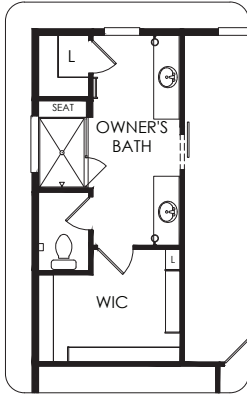
FLOORPLAN BROCHURE

LYNWOOD

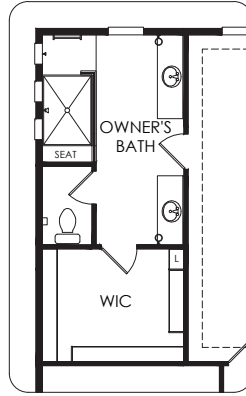
3,236 SQ. FT. | 4-6 BEDROOMS | 2.5-4 BATHROOMS | 2-CAR GARAGE



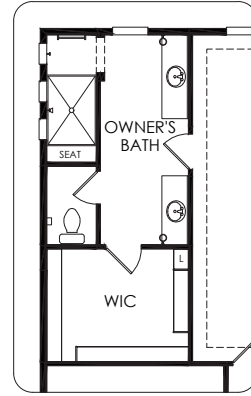
70055 - Owner's Bath
Freestanding Tub



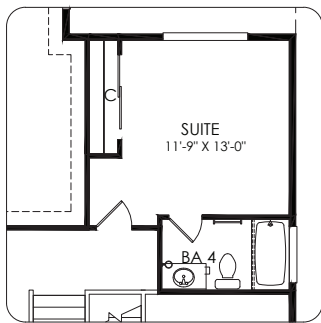
70497 - Barn Door



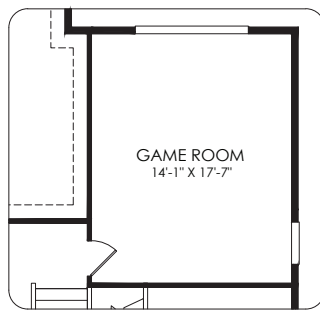
70011 - Owner's Bath
Glass Walk-In Shower Half Wall



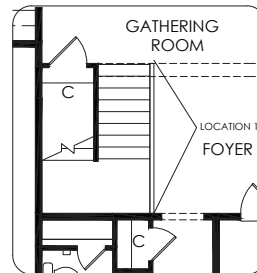
70009 - Owner's Bath
Framed Walk-In Shower



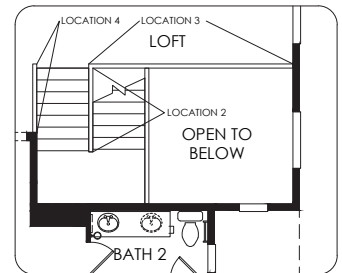
70034 - Suite



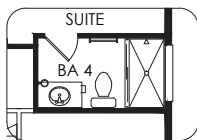
70094 - Game Room



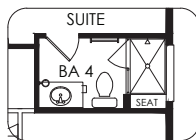
70220 - Rail Location 1



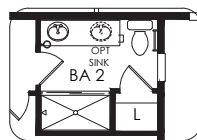
70221 - Rail Location 2
70222 - Rail Location 3
70223 - Rail Location 4



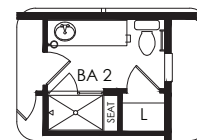
70017 - Secondary
Bath - Shower



70026 - Secondary
Bath - Shower
With Seat



70017 - Secondary
Bath - Shower



70026 - Secondary
Bath - Shower
With Seat



In our continuing effort to improve our product, Pulte Homes reserves the right to make changes or modifications to plan specifications, materials, features, or floor plans without notice. Room dimensions are approximate and actual square footage may vary by elevation. Please see a sales associate for details. Renderings are for illustrative purposes only and is not intended to be an actual representation of a specific home being offered. Square footages listed are approximate. This material shall not constitute a valid offer in any state where prior registration is required or if void by law. Additional conditions, limitations, and restrictions apply; see a sales associate for details. ©2020 Pulte Homes. All rights reserved.

MCCORMICK TRAILS

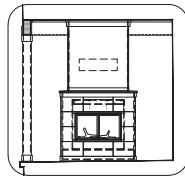
FLOORPLAN BROCHURE

LYNWOOD

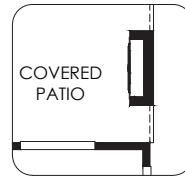
3,236 SQ. FT. | 4-6 BEDROOMS | 2.5-4 BATHROOMS | 2-CAR GARAGE



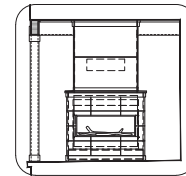
70839 - Fireplace
Exterior - Veneer



70839 - Fireplace
Exterior - Veneer



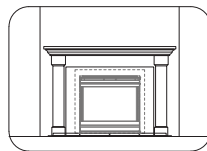
70841 - Fireplace
Exterior 2 - Veneer



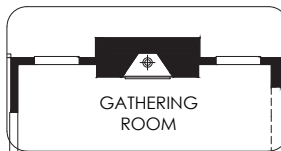
70841 - Fireplace
Exterior 2 - Veneer



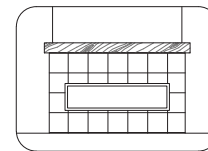
70800 - Fireplace
Interior



70800 - Fireplace
Interior



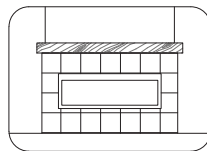
70810 - Fireplace
Interior 2



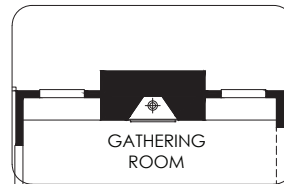
70810 - Fireplace
Interior 2



70812 - Fireplace
Interior 3 - Electric



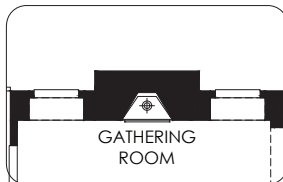
70812 - Fireplace
Interior 3 - Electric



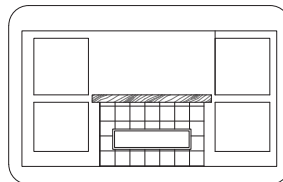
71051 - AV Built-In
with Fireplace



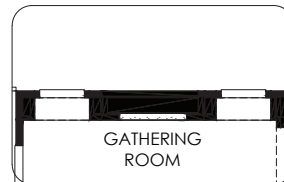
71051 - AV Built-In
with Fireplace



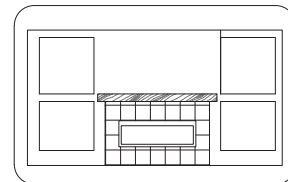
71062 - AV Built-In
with Fireplace 2



71062 - AV Built-In
with Fireplace 2



71084 - AV Built-In with
Fireplace 3 - Electric



71084 - AV Built-In with
Fireplace 3 - Electric